



POBY EMBER

INSTRUCTION MANUAL

1

This guide will show you how to use your Poby
Including preparation,cleaning,advance usage.

Package Includes / P3

Quick Start / P4

Deep Clean / P6

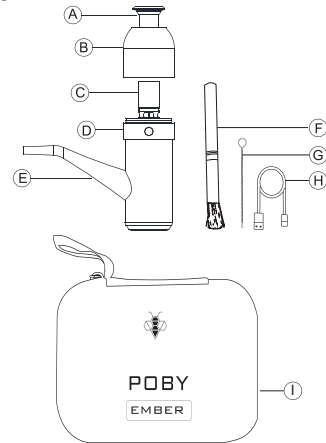
Advanced Usage / P6

General Warnings / P6

Help/Contact Us / P7

2

Package Includes:



- | | |
|----------------|---|
| A:Infusion Cap | F:Boar Brush |
| B:Glass Cap | G:Cleaning Brush |
| C:3D Heater | H:USB-C Cable |
| D:Battery Base | I:Carrying Case
(Different on options) |
| E:Glass Body | |

*Each glass piece is hand blown and may be different in size.

**Charger is not supplied and available on jcvap.com.

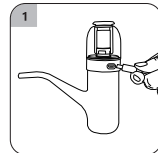
3

Before You Begin

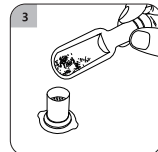
Poby is a 2-in-1 device. To use Dry Herb mode, make sure accessories A, B, and C are installed **(these parts can't be used on Concentrate)**. After battery reinstallation, it defaults to Concentrate mode. Press the button 5 times to switch:

- 3 green flashes = Dry Herb
- 3 red flashes = Concentrate

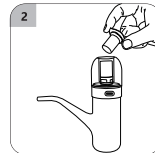
Quick Start



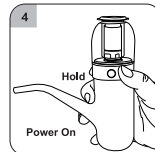
Fully charge the device before first use. While charging, the LED color shows battery level. It blinks during charging and stays solid white when fully charged.



Turn the infusion cap upside down, add the material into the bottom chamber, and gently pack it down.

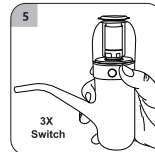


Remove the infusion cap from the top. Please note that if the device is heating, hold the silicone part only to avoid burns.

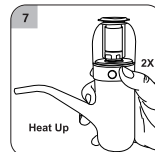


Open/Close the device, hold down the button 3 seconds.

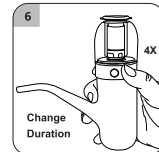
4



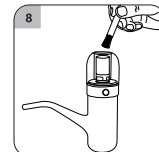
Press the button three times in a row to switch the temperature, Blue (347°F), Green (365°F), Yellow (383 °F), Red (401°F), Purple (419°F), White (437°F).



Initiate heat-up/exit, Double click the power button. Pulsing light indicates heat-up mode is active. Device will vibrate when ready. Inhaling gently will produce the best results.



Press the button four times in a row, then single click to adjust duration time, Green(60s) Red(75s), Purple (90s), White(180s), Wait automatically save settings in 4 seconds. Default 60 seconds.

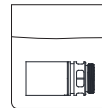


After use, please wait for the device to cool down and use boar brush to clean the heater and glass cap. Clean the glass screen with a dry cloth coated with a small amount of alcohol. Be careful not to directly pour alcohol or liquid onto the glass on the screen, this may penetrate into the circuit board and damage the device.

5

Deep Clean

After multiple uses, residual material will accumulate on the heater, air inlet, glass cap, and glass bodies. This buildup can significantly impact vapor production and flavor quality, and excessive residue may infiltrate the device, affecting its functionality.



After complete cooling, take it off and soak it in alcohol 10 minutes, then clean with a cotton swab.



Use a cleaning brush dipped in alcohol to scrub the air inlet thoroughly, brushing back and forth.

Advanced Usage

1. Battery level check

Single click, the light will flash to display the battery level: red light (below 25%), blue light (25%-50%), green light (50%-75%), white light (above 75%).

2. Lighting effects

Press 6 times consecutively to turn the lighting effects on or off.

3. Replace the battery

Please use a high-capacity battery with a discharge rate of more than 15A. Failure to do so may result in insufficient temperature and could potentially damage the device and battery.

GENERAL WARNINGS

- 1, Do not clean the heater until it has fully cooled to avoid damage.
- 2, Please clean any residue from the surface of the battery promptly to maintain its lifespan.
- 3, Do not overfill the heating cup.
- 4, Do not blow or exhale hard into the glass, This will cause spillage and damage the device.
- 5, Strong inhale may also cause spillage and damage the device.
- 6, Keep away from moisture and high humidity.
- 7, During use the top glass cap is hot (Burn Hazard).

6

HELP/CONTACT US

Please do not return the device to us or make a charge back. Keep your proof of purchase.

If you're having anything less than a perfect experience, reach out to our support team.

1. Visit jcvap.com/livechat.

Initiate a live chat is the fastest way to contact with us. All business days we are online at working time. If we are offline due to time zone difference, please leave message and your email address. We will contact you at the first time when we come back to work.

2. Email

You can send your video/image with issue to our after-service email box: service@jcvap.com. That may solve your problem quickly.



Use #JCVAPPOBY to share your experience.

Kindly follow us on Instagram!

@JCVAPTECH

7



POBY EMBER

JCVAP.COM

by JCVAP Technology Co., Ltd - All Rights Reserved

8